

GSX8-HV-WF

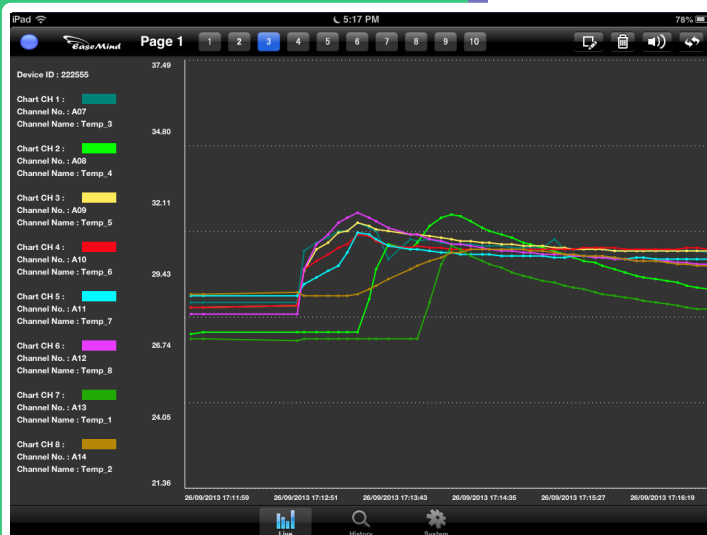
Wi-Fi Multipoint Temperature Data Logger

~ support 8 x temperature sensors



- ◆ **Free Software!**
- ◆ **Direct Network Access!**
- ◆ **No cabling!**

- ☑ **Monitor temperature and sensors over Wi-Fi**
- ☑ **Receive temperature data to PC/iPad/Android over Wi-Fi network**
- ☑ **Displays temperature information numerically and graphically**
- ☑ **Audio & Visual alarm of high/low temperature**
- ☑ **Monitor your equipment, air conditioner/heater instantly**
- ☑ **Summary list of temperature information at any time**
- ☑ **Download your daily, weekly, monthly, or average temperature**
- ☑ **Save money with wireless Wi-Fi transmission, and no cabling**



Windows 8

Wi-Fi Link



Available on the iPad
App Store

ANDROID APP ON
Google play

How user view temperature?

GSX4/8-WF Wi-Fi Temperature Data Logger is simple to install and use. The sensor is connected to GSX48-WF with wire up to 150m.

Configure GSX4/8-WF in the same Wi-Fi network with your PC or Tablet. Monitor the temperature display on iPad/Android/PC over the LAN or Internet.

Watch how the display instantly updates as temperature changes in your house, office or warehouse. Check the temperature history or compare for different locations.

“Wi-Fi Link” for Windows, iPad & Android

It is a free software allowing users to display the temperature, alarm status no matter where they are.

Setup is simple. Simply login with user account, and get the data instantly over Wi-Fi network.

Live Mode



Comparison Mode



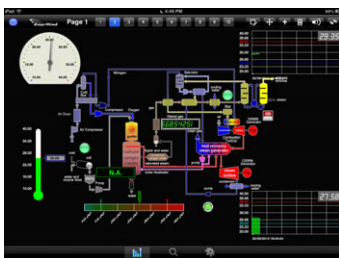
History Mode



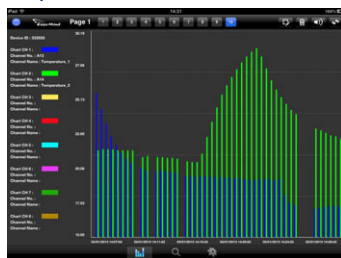
Temperature Alarm



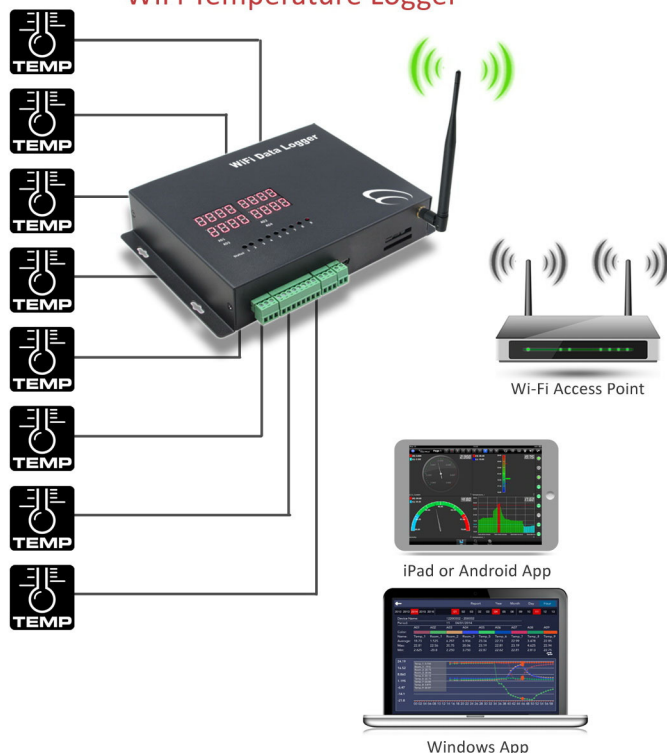
HMI Mode



Report Mode



WiFi Temperature Logger



Features

1. Wi-Fi Ethernet Network Transmission
2. Max. 8 digital temperature & 1 humidity sensors
3. 4MB Data Logging Memory [SD Card Expansion]
4. Data & Alarm via Wi-Fi Ethernet
5. Programmable Data Upload Interval
6. Programmable Data Logging Interval
7. Digital Alarm Input & Relay Output

Wi-Fi Network

- ◆ Wi-Fi 11b/g/n
- ◆ Station & Access Point WiFi Mode
- ◆ WPA2-PSK, WPA-PSK, WEP

Network Support:

- ◆ Server & Client Network Mode
- ◆ UPD or TCP network protocol
- ◆ Both Fixed IP & Dynamic IP (DHCP)

Wi-Fi

TEMPERATURE DATA LOGGER

Package:

- 1 x GSX4/8-WF Wi-Fi Data Logger
- 1 x AC/DC Power Adaptor
- 1 x Wi-Fi Antenna

Specifications

Temperature & Humidity Sensors

Sensor: Temperature
DS18B20

Range: -55 ~ 125 °C

Accuracy: +/- 0.5 °C

Resolution: 12 bit (0.0625 °C)

Sensor: Submersible

Housing: Waterproof Steel

Power Input: 3.5~5.5VDC

Sensor Cable: 2 meter (max. 150m)



Humidity
CH1B

1 ~ 100% RH

+/- 5% RH

12 bit

Indoor Type

PVC

3.5~5.5VDC

2 meter (max. 150m)



Models

Model Selection	GSX8-HV-WF	GSX4-HV-WF
Metal Enclosure	✓	✓
Power Input: 9 ~ 15VDC	✓	✓
2Ah Rechargeable Backup Battery	✓	✓
Power Loss Alert	✓	✓
Built-in 5VDC output	✓	✓
Digital Alarm Channel (DI)	10	3
Relay Output (DO)	4	2
Internal Memory	4MB (~3K records)	4MB (~3K records)
SD Memory Card Slot	✓	—
Digital Temperature Sensor	8	4
Humidity Sensor	1	1
Data Logging Interval	Programmable (1 ~ 60 minutes)	
Data Upload Interval	Programmable (5s ~ 24 hours)	
Data Upload	On Schedule / Manual / Alarm Triggered	
Alarm Trigger	Digital Alarm / Power Loss	
Data Transmission	Ethernet- Server / Client mode	
Protocol	Ethernet - UDP & TCP	
Central Server	Network Server IP	
Alarm Data	Ethernet	
WiFi Module	WiFi b/g/n	
Encryption	WPA2-PSK, WPA-PSK, WEP	
Bundled Software Free	Standard Edition	
Setup Software	USB Port	
Client Software	Wi-Fi Link [for Windows, iPad, Android]	
Centre Software	Support txt database	
Optional Software	Ultimate Server Client Software Package	

Data Logger Electrical Specification:

Power Input: 10~15VDC

Power Rating: Standby, 20mA

Data Upload, 0.5A

Alarm Input: Power Type or Dry Contact

Relay Output: Max. DC24V @3A,
Max. AC120V @3A

Optional Numeric LED Display

- ◆ 4 channels 4-digits LED display
- ◆ User selectable display channels
- ◆ Instant view of live data



Free Software

Wi-Fi Link for Windows, iPad, Android

- ◆ Direct LAN access
- ◆ Live & historical data graphics view
- ◆ Instant download data

